
City of Kelowna

MEMORANDUM

DATE: December 21, 2004
FILE: 6120-20
TO: Ron Born, City Manager
FROM: Joe Creron, Parks Manager
SUBJECT: **CRAWFORD ESTATES MOUNTAIN BIKE SKILLS PARK**

Prepared By: Terry Barton, Parks Planner

RECOMMENDATION:

THAT Council endorse the Crawford Estates Mountain Bike Skills Park initiative in principle;

AND THAT staff be directed to partner with the Kelowna Mountain Bike Club (KMBC) in planning and developing the mountain bike skills park under the following principals:

- The Kelowna Mountain Bike Club will design and construct a mountain bike skills park to the Parks Division's approval;
- The park will be open to the general public and consistent with the City's Park Bylaw No. 6819;
- The location of the mountain bike skills park is located on a portion of leased land from the Crawford Estates School District #23 land as shown in schedule 1;
- The Kelowna Mountain Bike Club and the City of Kelowna will enter into a one (1) year license & maintenance agreement for the park;
- The Kelowna Mountain Bike Club will provide and indemnity to the City and hold the City harmless for losses or accidents that occur related to the design, construction and operation of the mountain bike skills park;
- The mountain bike skills park is a pilot project and deemed temporary in nature;
- That all improvements deemed appropriate will be removed in the event that the School District develops a school or sells the land.

BACKGROUND:

In the summer of 2004, an unsanctioned mountain bike structure was constructed on the School District #23 land by an informal youth group in the Crawford Estates neighbourhood. The structure was removed upon request by the City Parks staff due to public safety concerns. Since then, the youth have joined the Kelowna Mountain Bike Club (KMBC) and submitted a proposal to the Parks Division for a fully sanctioned mountain bike park on the School District # 23 land. KBMC also approached the Crawford Estates residents group with the proposal in September and the residents group endorsed the project.

The City of Kelowna negotiated with School District #23 on the proposed parcel of land for an occupier's lease of 5 years for landscape improvements. A restriction of the lease is to ensure that any landscape improvements will not jeopardize the future redevelopment of the site as a school (Schedule 2).

The Mountain Bike Skills Park proposal was presented to the Parks & Facilities Committee on December 8th, 2004 and received unanimous support.

Other municipalities across B.C. have successful mountain bike skill parks that are frequently used by teenagers and young adults. This project will represent an opportunity to engage this demographic in a constructive and positive activity. The operational model wherein a third party club operated and maintains the mountain bike skills park has been employed in other B.C. municipalities as well. This model leverages the expertise and passion of mountain bikers to maintain a park that serves their own recreational segments in a sport that continues to grow in popularity.

THE MOUNTAIN BIKE SKILLS PARK VISION

Schedule 3 outlines the preliminary concept plan for the Mountain Bike Skills Park. As part of the proposal, the Kelowna Mountain Bike Association will design, fundraise, construct and maintain the mountain bike skills park. They will also be responsible for fundraising, providing insurance, event activity organizing and reporting of any hazards to the City. The City will administer the lease on the land, provide administrative support, carry out regular maintenance inspections of the park, provide outdoor event permit insurance and assist in removal of any reported hazards.

In an effort to minimize the potential risks of the mountain bike skills park, the following key initiatives will be included in the project:

- Proper signage that clearly communicates the level of risk of each mountain bike structure using the universal green, blue, black coding system; and appropriate age group;
- A site design that includes one main entrance/exit point to act as a gateway;
- Signage at the gateway that clearly communicates appropriate rules and conduct;
- Mountain bike structures will be designed with demonstrated standards and guidelines from other municipalities and private mountain bike park operations;
- All structures will be approved by a certified carpenter or professional equivalent;
- The Kelowna Mountain Bike Association will commit to a weekly maintenance schedule and preventive maintenance procedures;
- For the initial year of operation, height of all structures and stunts will be no higher than that deemed to be appropriate for moderate skill level bikers as defined by accepted guidelines and standards; allowable height of structures will be reevaluated in the fall of 2005;
- No events, as defined by the Outdoor Events By-law, will be allowed in the park without an appropriate permit issued by the City;
- Appropriate contact information will be posted and for reporting to the KMBC any problems and KMBC will report any hazards or unapproved structures to the City;
- Any known or reported hazards or unapproved structures in the Park will be removed in a timely fashion by KMBC.

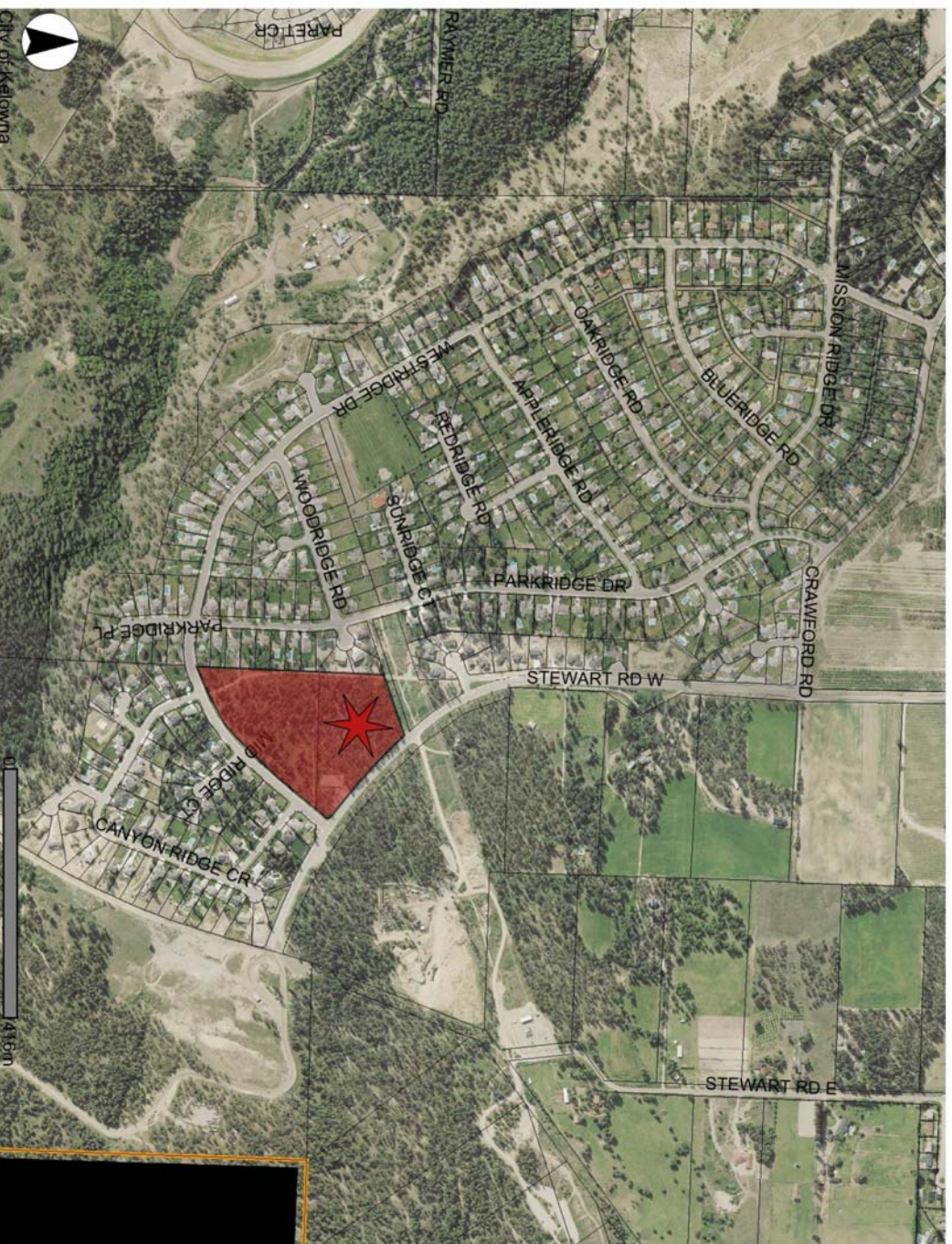
CONCLUSION

The Crawford Estates Mountain Bike Skills Park presents an opportunity to the City to partner with the Kelowna Mountain Bike Association and the local residents on a recreation facility oriented towards teenagers and young adults. This project is a fine example of working together with the youth of this City in a positive and proactive manner, on a rapidly growing sport.

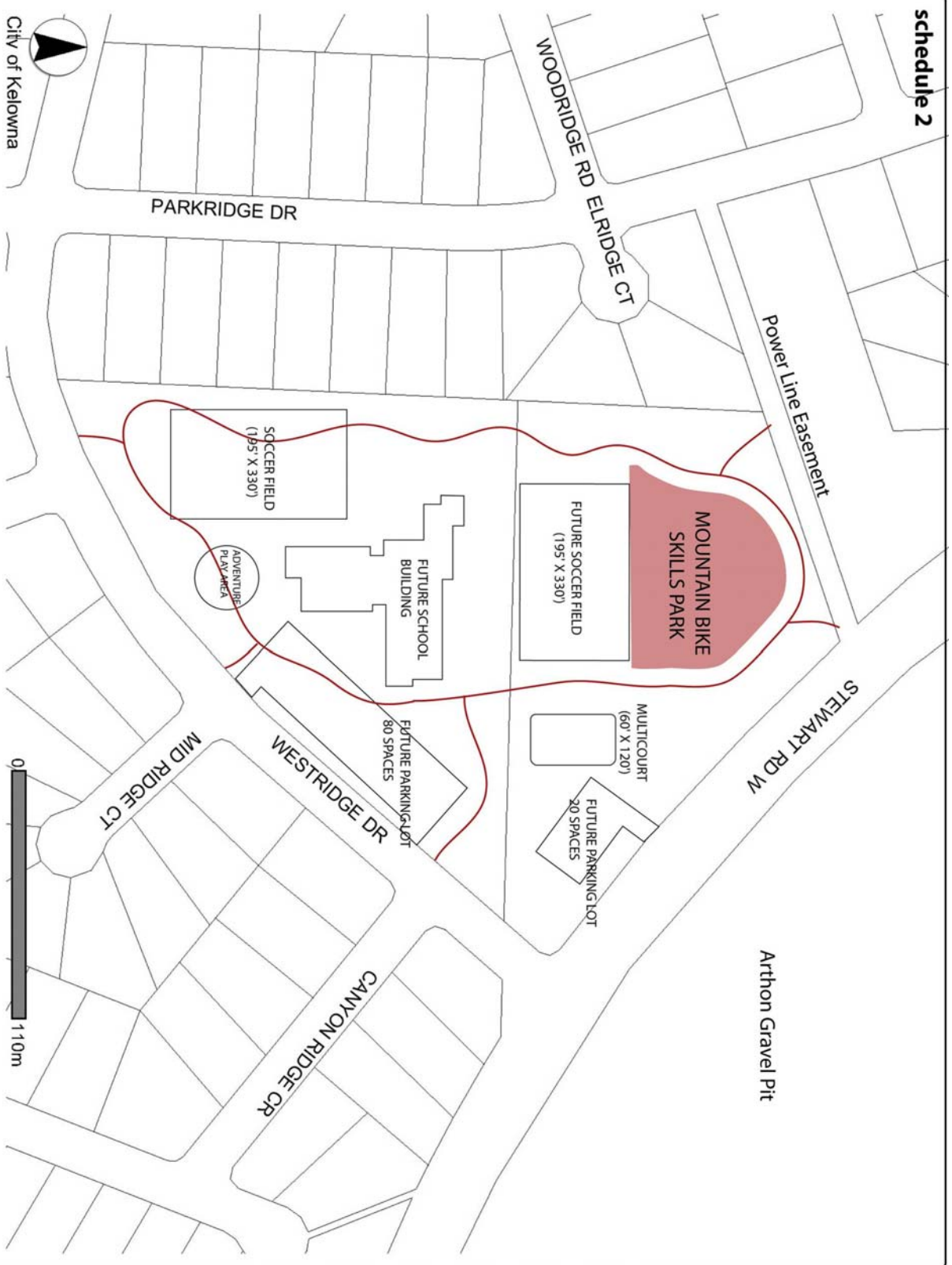
Joe Creron
Parks Manager

Encl.

Cc Director of Parks and Leisure Services
 Risk Manager

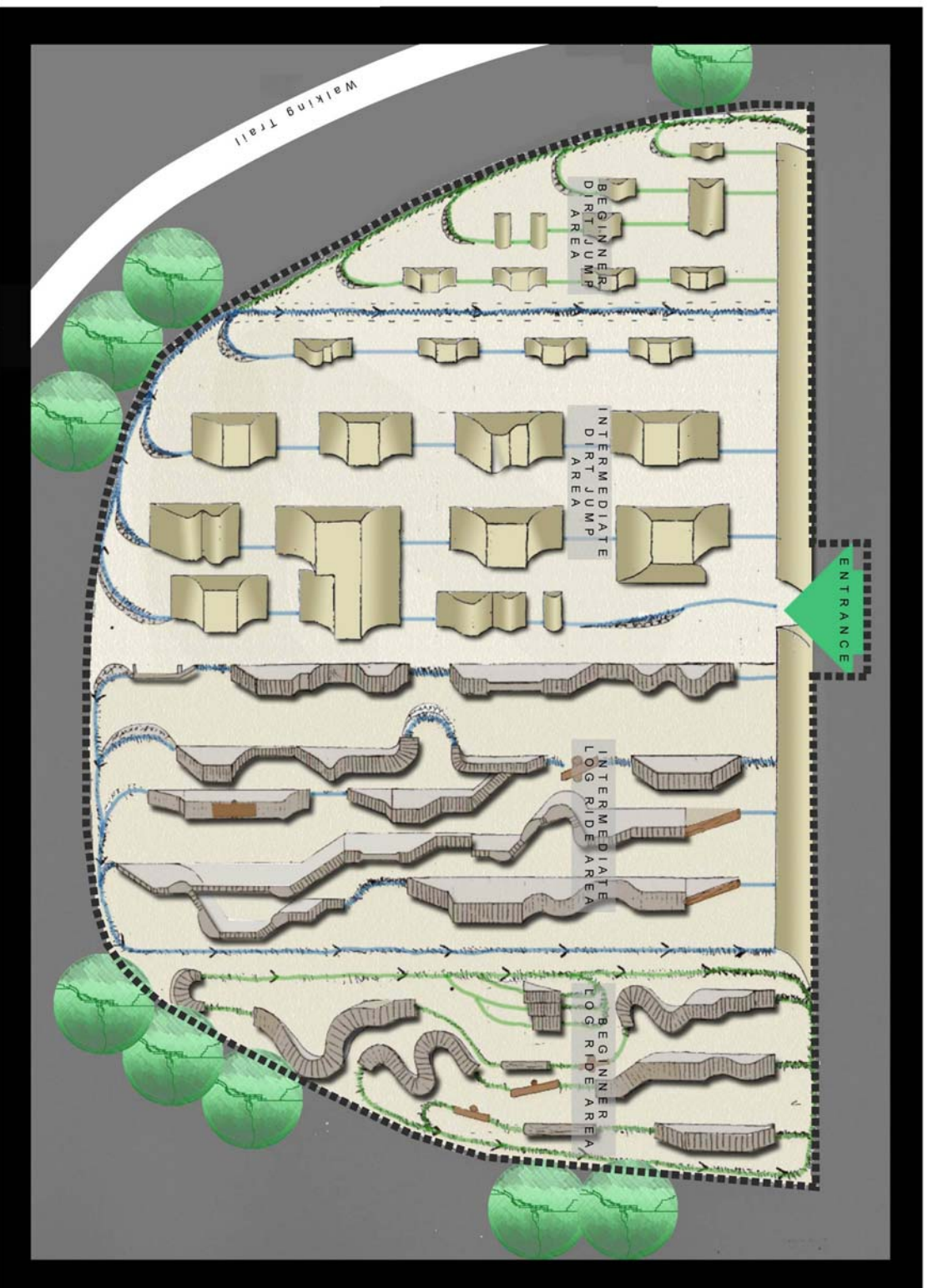


Crawford Estates School Location Map



City of Kelowna

KMBC Mountain Bike Skills Park Proposal | Site Map



KMBC Mountain Bike Skills Park Proposal | Concept Plan

